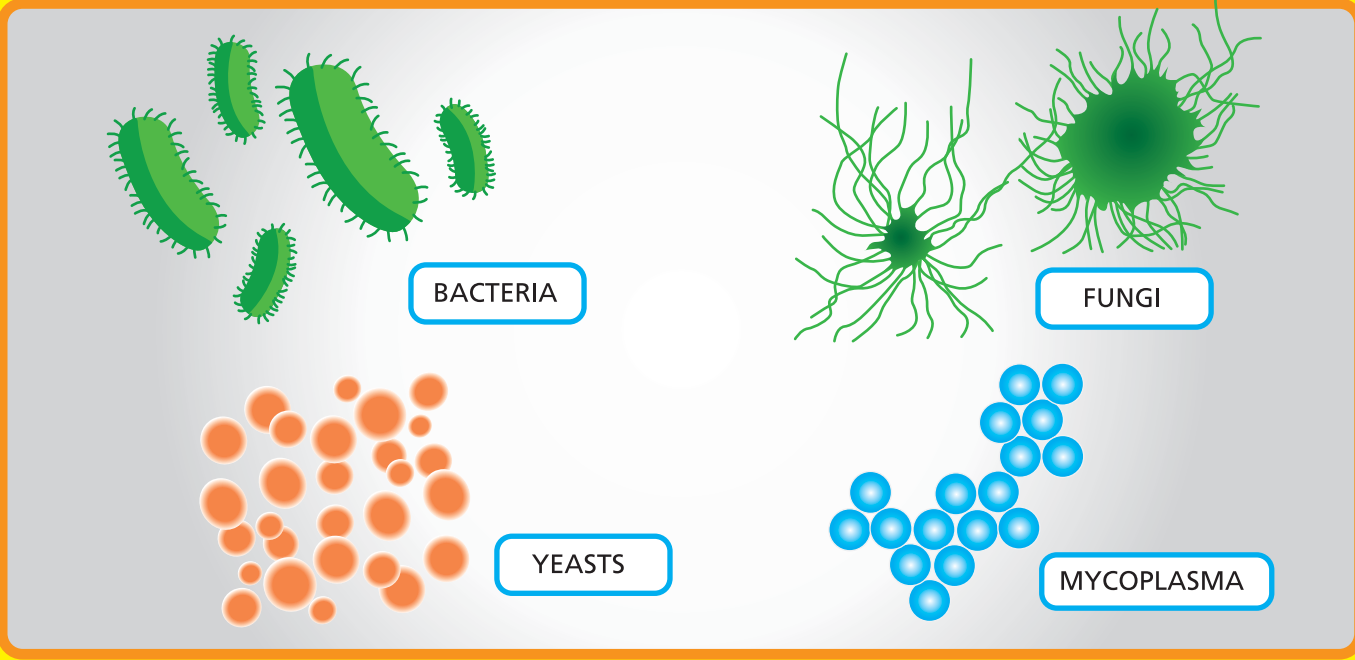


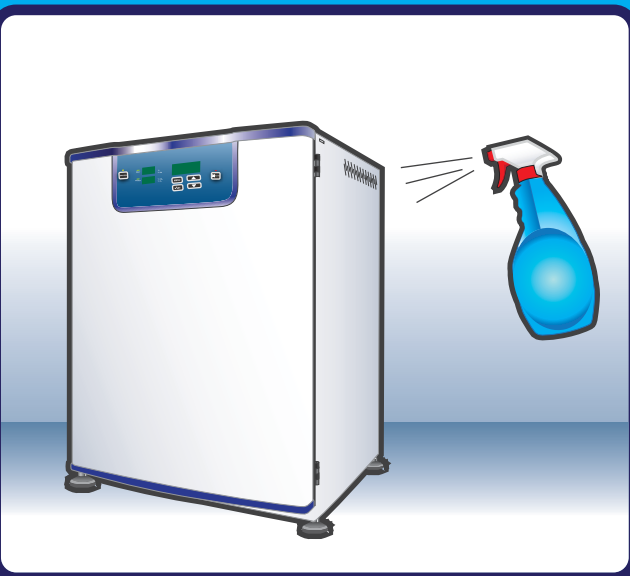
# HOW TO SAFEGUARD YOUR CELL CULTURE FROM CONTAMINATION

## MOST COMMON CONTAMINANTS



## CONTAMINATION OF YOUR CELL CULTURE CAN BE THE RESULT OF ANY OF THESE CONDITIONS:

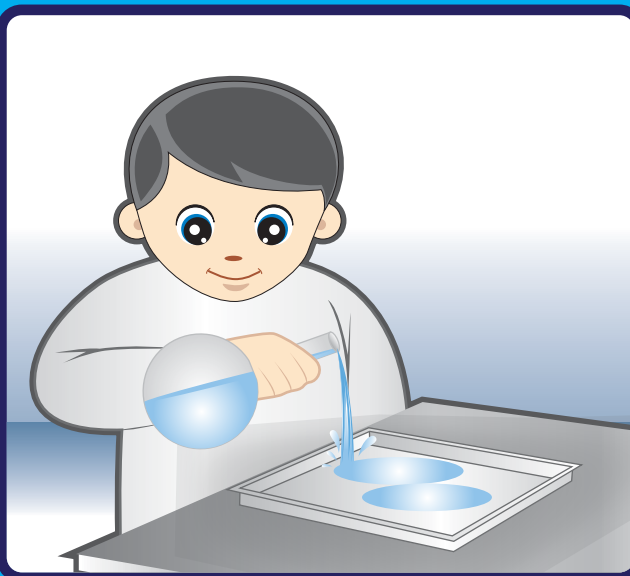
- Contaminated glass or plastic ware
- Contaminated media
- Contaminated cell line
- Improper technique
- Incubator & its components
- Airborne contaminants
- Lab environment & instruments
- Operators themselves!



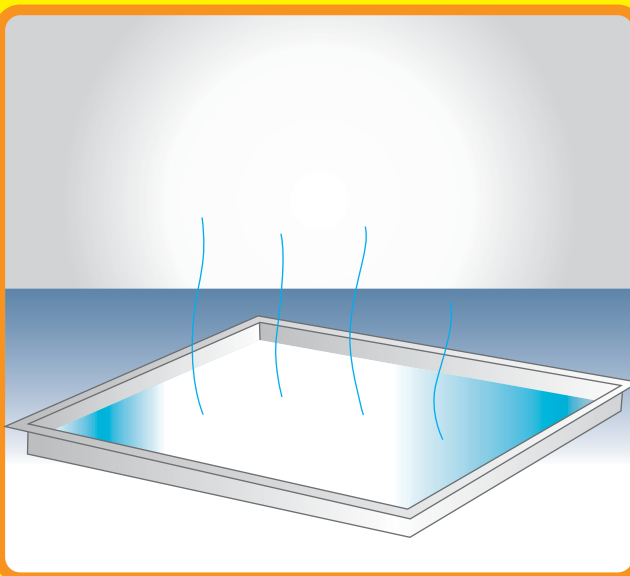
CO<sub>2</sub> Incubator needs to be cleaned with a disinfectant or detergent first and then rinsed with sterile water followed by 70% alcohol.



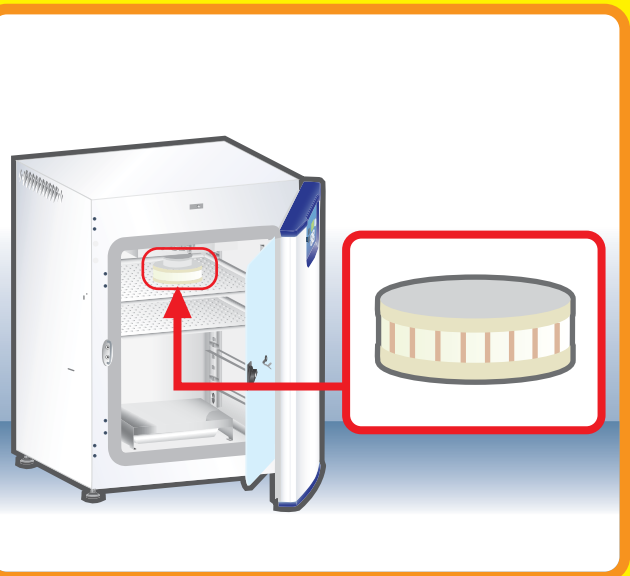
Avoid chlorine-based detergents/disinfectants.



Change water (sterile water recommended) in water pan periodically.



Allow autoclaved water to cool before adding to water pan.



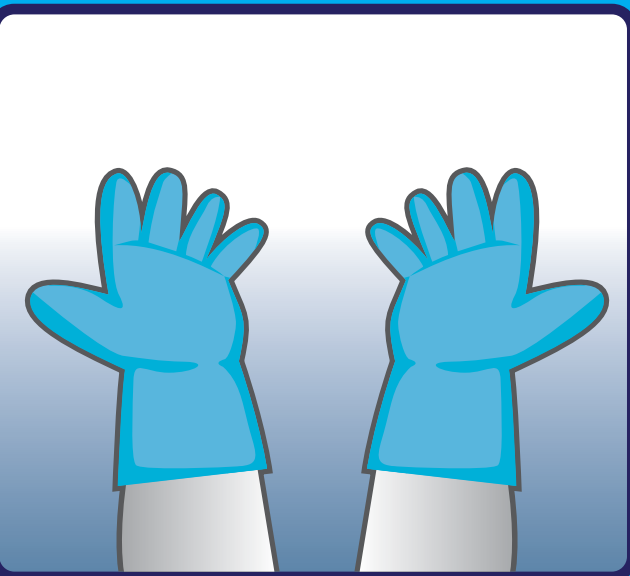
Change ULPA filter at least once a year.



Do not keep CO<sub>2</sub> Incubator door open for too long.



Avoid talking, laughing, coughing, when opening CO<sub>2</sub> Incubator door.



Always wear gloves.



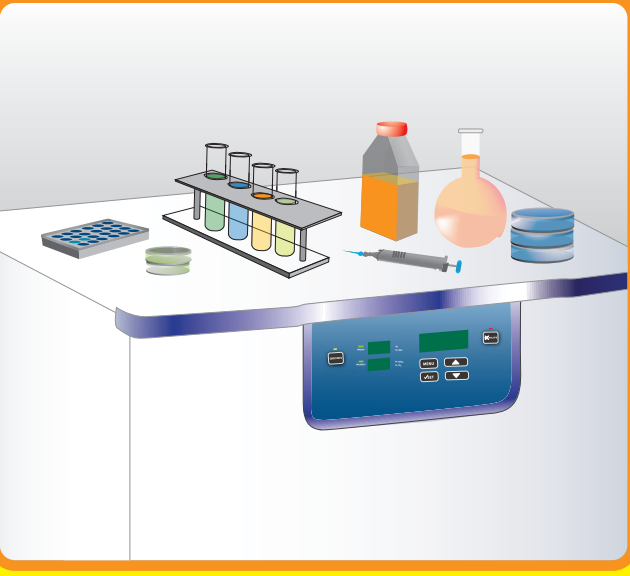
Keep air clean: no eating, drinking, smoking.



Always wear clean lab coat.



Work surface of Biological Safety Cabinet / Laminar Flow Cabinets must be cleaned before and after use.



Avoid leaving medium and culture container on contaminated surfaces.

# ESCO

WORLD CLASS. WORLDWIDE.

NB: Additional reference materials on safe working practices are available from Esco. In addition, we conduct regular training seminars around the world. Please contact us for more information or visit <http://www.escoglobal.com>

Esco Technologies, Inc. • 2940 Turnpike Drive, Units 15-16 • Hatboro, PA 19040, USA and Canada 877-479-3726 • Tel 215-441-9661 • Fax 215-441-9660 • [www.us.escoglobal.com](http://www.us.escoglobal.com) • [usa@escoglobal.com](mailto:usa@escoglobal.com)  
Esco Micro Pte. Ltd. • 21 Changi South Street 1 • Singapore 486 777 • Tel +65 6542 0833 • Fax +65 6542 6920 • [mail@escoglobal.com](mailto:mail@escoglobal.com) • [www.escoglobal.com](http://www.escoglobal.com)

Esco Global Offices | Kuala Lumpur, Malaysia | Leiden, The Netherlands | Manama, Bahrain | Marietta, OH USA | Mumbai, India | Philadelphia, PA USA | Salisbury, UK | Shanghai, China | Singapore